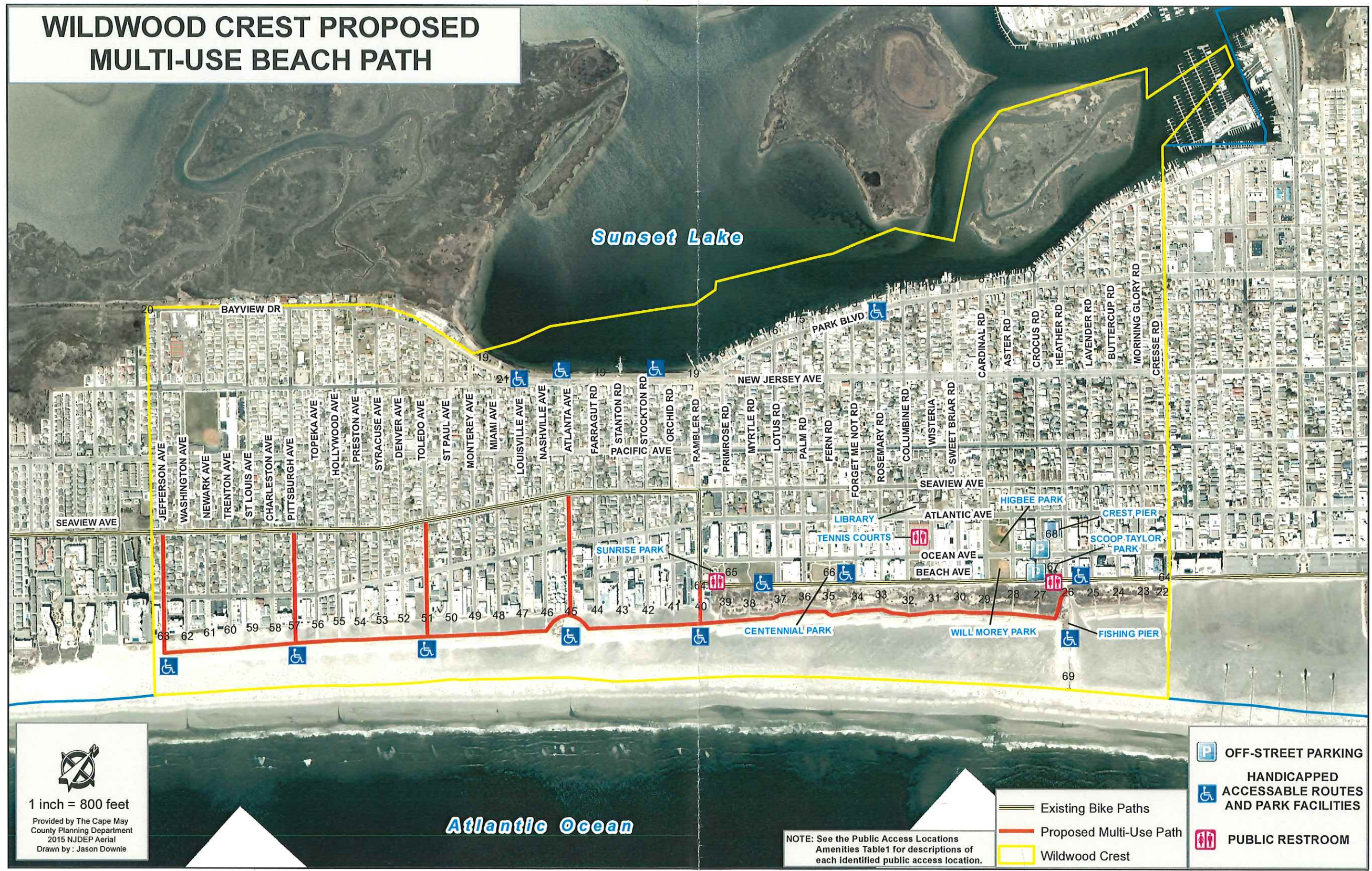


WILDWOOD CREST PROPOSED MULTI-USE BEACH PATH




 1 inch = 800 feet
 Provided by The Cape May
 County Planning Department
 2015 NJDEP Aerial
 Drawn by : Jason Downie

Atlantic Ocean

NOTE: See the Public Access Locations Amenities Table1 for descriptions of each identified public access location.

-  Existing Bike Paths
-  Proposed Multi-Use Path
-  Wildwood Crest
-  OFF-STREET PARKING
-  HANDICAPPED ACCESSIBLE ROUTES AND PARK FACILITIES
-  PUBLIC RESTROOM