



Borough of Wildwood Crest
Cape May County, New Jersey

Stormwater Pollution Prevention Plan (SPPP)

June 9, 2017

Revised August, 2024

Prepared by:

**DEBLASIO &
ASSOCIATES**

CONSULTING ENGINEERS AND PLANNERS

4701 New Jersey Avenue

Wildwood, NJ 08260

Phone: 609.854.3311

Fax: 609.854.4323

A handwritten signature in blue ink that reads 'Marc A. DeBlasio'. The signature is written in a cursive style and is positioned above a horizontal line.

Marc A. DeBlasio, PE, CFM

New Jersey PE License No. 41599

ASFPM Certified Floodplain Manager: US-17-09583

TABLE OF CONTENTS

Section 1 **Introduction** 1.1

Section 2 **Municipal Audit** 2.1

Section 3 **Stormwater Pollution Plan Forms, Sample Logs** 3.1

Section 4 **NJPDES Permit Tier A Requirements**..... 4.1

Attachment A – Points System for Public Education and Outreach Activities.....4.2

Attachment B – Design Standards for Storm Drain Inlets.....4.3

Section 5 **Annual Report and Certification**5.1

Section 6 **Pamphlets for Public Distribution** 6.1

Section 7 **Maps, Logs, and Sample Forms**.....7.1



1. Executive Summary

DeBlasio & Associates was authorized by the Borough of Wildwood Crest to provide Year 1 services for the Borough's compliance with the New Jersey Municipal Separate Storm Sewer System (MS4) regulations.

As part of our services, we performed an audit of the facility, including site inspection and interviews with Borough personnel. Using this information, and data obtained from the facility, the enclosed Stormwater Pollution Prevention Plan (SPPP) was prepared. The SPPP plan was prepared using forms prepared by the NJDEP and contained in the NJDEP's "**Final Minor Modification Tier A Permit**", published November 1st 2023.

The SPPP Plan itself is comprised of twelve (12) SPPP Forms and the Tier A Permit requirements set forth by the NJPDES which range from implementation schedules to best management practices. These forms must be updated over time as the Borough achieves compliance with various MS4 obligations, and as operations and personnel change. The Borough will be provided with an electronic copy of the forms for maintenance purposes.

Enclosed in **Section 6** are copies of five (5) pamphlets that must be distributed and/or mailed to residents – the Public Education, Pet Waste, Car Wash, Fertilizer and Motor Oil Pamphlet. Color and black-and-white copies of these materials are also available on-line at the following address:

https://www.nj.gov/dep/dwq/msrp_ed_brochure.htm

1. Municipal Audit

The following information was provided from July 2024 interviews of Steve Shearer, Director of Public Works:

A. Storm Drain Inlet Labeling

Wildwood Crest Borough has labeled and marked all inlets and routinely checks inlets. Any inlets that have damaged or missing inlet labels will be replaced.

B. Outfall Mapping

The Borough has mapped all outfalls discharging into waterways identified for stormwater labeling above. Minimum requirement, per the regulations, is to show approximate location on tax maps/100-scale mapping. Existing Borough and County stormwater mapping, updated, will be used.

C. Illicit Connections

All Borough outfalls that discharge to waterways are inspected routinely for evidence of illicit connections (i.e., for pipe discharges after dry weather events). Dry weather defined as no rain for at least 3 days. Some discharges (sump pumps, street cleaning, residential car washing, etc.).

D. Yard Waste Collection

There is curbside no yard waste collection in Wildwood Crest Borough. Residents are instructed to bag or bind leaves and yard waste for temporary placement in the back yards of residences. Residents call the Borough Public Works to request pickups on an as-needed basis.

Residents may also drop off yard waste located on Bayview Drive between Newark Avenue and Jefferson Avenue.

There is ordinance prohibiting non-containerized wastes being placed on the road.

E. Street Sweeping

There is a requirement for monthly sweeping of all streets, weather and street surfaces permitting, which meet all of the following criteria:

- Commercial areas (non-residential) predominantly
- Borough owned and operated
- Curbed streets roads and highways
- Speed limit of 35 mph or less

The Borough of Wildwood Crest currently sweeps all of its streets in excess of the monthly MS4 standard. At a minimum, all Borough streets meeting the above referenced criteria will be swept at least monthly by DPW personnel, weather and street-surfaces permitting.

F. Stormwater Facility Maintenance

The Borough of Wildwood Crest’s stormwater collection facilities are primarily inlets and piping.

All facilities must be inspected, maintained and/or repaired as necessary annually (e.g., cleaned or repaired as necessary to maintain functioning of systems). “System” only includes stormwater infrastructure owned and maintained by municipality.

The Borough of Wildwood Crest already cleans its inlets at least annually and will comply with this MS4 requirement.

G. Outfall Pipe Remediation

The Borough has mapped and inspects all outfalls discharging into waterways routinely for stormwater labeling above. Where repairs are necessary (e.g., for downstream erosion), Borough will prioritize, schedule repairs.

H. De-icing material storage

The Borough stores salt in a barn-like building in its public works yard. This facility meets both the interim and final MS4 deicing storage standards. In addition, sand is stored in an open bin at this yard, but the bin opening is over 50 feet away from the nearest stormwater inlet.

I. Employee Training Requirements

The Borough conducts annual Employee Training per its MS4 obligations. Employee training will be modified per the updated MS4 permit requirements.

Stormwater Pollution Prevention Plan

*Borough of Wildwood Crest
Cape May County
Permit Number NJG0150151
Annual Review Date: 8/19/2024
Stormwater Program Coordinator: Marc DeBlasio*

Table of Contents

Form 1 – Team Members	3
Form 2 – Revision History	4
Form 3 – Public Announcements	5
Form 4 – Post-Construction Stormwater Management in New Development and Redevelopment ...	6
Form 5 – Ordinances	8
Form 6 – Street Sweeping	10
Form 7 – MS4 Infrastructure	11
Form 8 – Community-wide Measures	14
Form 9 – Municipal Maintenance Yards & Other Ancillary Operations	15
Form 10 – Training	19
Form 11 – MS4 Mapping	22
Form 12 – Watershed Improvement Plan	23

Form 1 – Team Members

Stormwater Program Coordinator (SPC)			
Name and Title		Marc DeBlasio, PE, CME	
Phone	609-854-3311	Email	marc@deblasioassoc.com
Individual(s) Responsible for Major Development Project Stormwater Management Review			
Name and Title		Patricia Feketics, Public Notice Coordinator Steve Shearer, Public Works Superintendent / Employee Training Coordinator	
Phone	(609) 729-8040 (609) 522-7446	Email	pfeketics@wildwoodcrest.org sshearer@wildwoodcrest.org
Name and Title		Don Cabrera, Commissioner of Public Works	
	(609) 729-8043	Email	dcabrera@wildwoodcrest.org
Other Municipal Stormwater Team Members			
Name and Title			
Phone		Email	
Name and Title			
Phone		Email	
Name and Title			
Phone		Email	
Shared/Contracted Service Providers			
Provider Name	Service Provided	Term of Service	

Form 2 – Revision History

Revision Date	Form # Changed	Reason for Revision (Updates to staff, policy, webpage, etc.)
3/1/2009		Updating based on NJDEP requirements
6/9/2017		Updating based on NJDEP requirements
6/19/2020		Updating based on NJDEP requirements
8/19/2024		Updating based on NJDEP requirements



Form 3 – Public Announcements
Part IV.B. and C.

1. Provide the link to the dedicated stormwater webpage for your municipality.
https://ecode360.com/36113486
2. List the name and title of person(s) responsible for stormwater webpage postings/updates.
Steve Shearer, Superintendent of Public Works Brian Cunniff, Webpage Manager
3. List the newspapers, social media outlets, websites, direct mailings (Email or postal), and other communication approaches typically used to inform/educate the public on stormwater program information and related events/activities.
https://wildwoodcrest.org/minutes.php

Form 4 – Post-Construction Stormwater Management in New Development and Redevelopment

Part IV.E.

<p>1. How does the municipality define “major development”? If it is different from the definition in N.J.A.C. 7:8, explain the difference.</p>
<p>The Borough of Wildwood Crest defines “major development” per N.J.A.C. 7:8</p> <p>See Code Enforcement 66-2 Definitions https://ecode360.com/37241771.</p>
<p>2. Is the municipality’s stormwater control ordinance (SCO) the same as or more stringent than NJDEP’s model SCO? If more stringent, explain the difference.</p>
<p>To control stormwater from new development and redevelopment projects throughout Wildwood Crest, (including projects we operate), we do the following:</p> <p>We are already ensuring that all new residential development and redevelopment projects that are subject to the Residential Site Improvement Standards for stormwater management (including the NJDEP Stormwater Management rules, NJAC 7:8, referenced in those standards) are in compliance with those standards. Our planning and zoning boards ensure such compliance before issuing preliminary or final subdivision or site plan approvals under the Municipal Land Use Law.</p> <p>Since the EDPA, Wildwood Crest has not constructed any new development or redevelopment projects on borough property. If we decide to construct such as project before our municipal stormwater control ordinance takes effect, we will ensure adequate long-term operation of BMPs for that project by requiring a project maintenance plan similar to the maintenance plan described in our draft of that ordinance, and by requiring and funding the implementation of that plan.</p>
<p>3. Describe the process for reviewing major development project applications for compliance with the SCO and Residential Site Improvement Standards (RSIS).</p>
<p>Stormwater management measures for major development shall be developed to meet the erosion control, groundwater recharge, stormwater runoff quantity, and stormwater runoff quality standards in Section 66-4. To the maximum extent practical, these standards shall be met by incorporating nonstructural stormwater management strategies into the design. If these strategies alone are not sufficient to meet these standards, structural stormwater management measures necessary to meet these standards shall be incorporated into the design.</p> <p>See Code Enforcement Stormwater Control 66-3 https://ecode360.com/37241771</p>

<p>4. Does your municipality have a mitigation plan included in your Municipal Stormwater Management Plan and Stormwater Control Ordinance? Indicate the location of records of all variances granted.</p>
<p>Yes, see Code Enforcement Stormwater Control 66-1 Scope and purpose https://ecode360.com/37241771</p>
<p>5. Indicate the dates of each iteration of the township’s Stormwater Control Ordinance, starting with the initial adoption and including revisions.</p>
<p>Chapter 66 of the Borough of Wildwood Crest for the following Stormwater Control Ordinances showing the adoption and revisions:</p> <ul style="list-style-type: none"> - Established Ordinance # 975 (adopted 4/6/2005) - Amending Ordinance # 1024 (adopted 1/24/2007) - Amending Ordinance # 1100 (adopted 6/9/2010) - Amending Ordinance # 1257 (adopted 7/5/2017) - Amending Ordinance # 1349 (adopted 3/31/2021)
<p>6. Indicate the dates of each iteration of the township’s Municipal Stormwater Management Plan, starting with the initial adoption and including revisions.</p>
<p>Chapter 66-4 of the Borough of Wildwood Crest for the following Stormwater Management Plan shows the adoption and revisions:</p> <ul style="list-style-type: none"> - Established Ordinance # 925 (adopted 4/6/2005) - Amending Ordinance # 1024 (adopted 1/24/2007) - Amending Ordinance # 1100 (adopted 6/9/2010) - Amending Ordinance # 1257 (adopted 7/5/2017) - Amending Ordinance # 1349 (adopted 3/31/2021)



Form 5 – Ordinances
Part IV.F.1.

Ordinance	Date Adopted	Was the DEP model adopted without change? If not, explain how the municipality's is more stringent.	Entity Responsible for Enforcement	Fees & Fines
1. Pet Waste	6/22/16	Yes	Police Department	\$100 - \$2000
2. Wildlife Feeding	6/22/16	Yes	Police Department	\$100 – \$2,000
3. Litter Control	6/22/16	Yes	Code Enforcement / Police Department	\$100 - \$2,000
4. Improper Disposal of Waste	7/05/17	Yes	Code Enforcement / Police Department	\$100 - \$2,000
5. Yard Waste	6/22/16	Yes	Public Works	\$100 - \$2,000
6. Private Storm Drain Inlet Retrofitting	06/01/10	Yes	Police Department	\$100 - \$2,000
7. Illicit Connections	7/05/17	Yes	Police Department	\$100 - \$2,000
8. Privately-Owned Salt Storage		N/A	Police Department	up to \$2,000 per day
9. Tree Removal-Replacement		N/A	Code Enforcement	up to \$2,000

List any additional stormwater-related ordinances the municipality has adopted that address issues beyond the scope of the MS4 permit. Include adoption date, entity responsible for enforcement, and related fees and fines.

<i>Ordinance</i>	<i>Date of Adoption</i>	<i>Entity Responsible</i>	<i>Fees & Fines</i>
10.Stormwater Control Ordinance	03/21/16	Police Department	up to \$2,000 per day
11.Refuse Container/Dumpster Ordinance	12/28/15	Code Enforcement	up to \$2,000
Dumpster Fee : 1.One Day \$20 2. One Week \$50 3. One Month \$100			

Our code enforcement officers and local police officers enforce these ordinances. If someone is found to be in violation of an ordinance, they will be issued a written warning for first time offenses, and penalties will be issued for subsequent offenses.

Indicate the location of records associated with ordinances and related violations and enforcement actions below.

6101 Pacific Ave, Wildwood Crest, NJ 08260

Form 6 – Street Sweeping

Part IV.F.2.a.i. and ii.

1. Provide a written description and/or attach a map outlining the sweeping schedule for the following:
 - Segments of municipal roads with storm drain inlets that discharge to surface water (required at least 3 times each year)
 - Segments of municipal roads that do not have storm drain inlets but do discharge to surface water (required at least 1 time each year)

Note: Only asphalt and concrete roads need to be swept. Roads that do not have storm drain inlets and do not discharge to surface water do not need to be swept.

Wildwood Crest shall sweep all Borough owned or operated curbed streets (including road or highways), with storm drains, that have posted speed limit of 35 mph or less (excluding all entrance and exit ramps), in predominantly commercial areas at a minimum of once per month, weather and street surface conditions permitting. The NJDEP encourages, but does not require, yearly sweeping of all streets in the municipality.

Wildwood Crest Public Works sweep schedule follows the same schedule and map of their trash and recycling collection. Please see the attachments 7.2-7.4

2. Indicate if sweeping work is outsourced and if so, describe the arrangement.

Sweeping work is not outsourced.

Form 7 – MS4 Infrastructure

Part IV.F.2-4. and Part IV.G.2-3.

1. Municipal Storm Drain Inlets

- a. Describe how you ensure that municipal inlets without permanent wording cast into the design have been properly labelled.
- b. Describe how you ensure that municipal and private storm drain inlets have been retrofitted.
- c. Describe how you ensure that newly installed storm drain inlets include corresponding catch basins or other BMPs to collect solids.
- d. Describe when and how you conduct inspections of storm drain inlets and the criteria used to determine when they need to be cleaned.

- a. The Borough has labeled all inlets on all roads within the Borough. The markers have the message "Drains to Waterway" and a picture of two turtles. During our annual catch basin cleaning program, we will be checking these labels to ensure they are still visible, and if they are not, we will ensure the labels are replaced immediately.
- b. For all projects, Wildwood Crest Borough uses the NJDOT bicycle safe grate style and (if needed) a curb opening with a clear space no bigger than two (2) inches across the smallest dimension. The Borough reviews specification, oversees and inspects installation of all retrofits to municipally owned storm drain inlets in compliance with MS4 Permit. Code Enforcement are charged with review of site plans for privately owned storm drain inlet retrofitting. Construction officials are required to review and inspect all plans for privately owned storm drains.
- c. The Borough routinely inspects all outfall pipes. Where repairs are necessary (e.g., for downstream erosion), Borough will prioritize, schedule repairs. Location of records can be found at Wildwood Crest Public Works, 120 W. Newark Ave., Wildwood Crest, NJ.
- d. Annual inspection, cleaning and maintenance are completed by Public Works. See Section 7 documents.

2. Municipal Catch Basins

- a. Describe when and how you conduct inspections of catch basins.
- b. Describe the criteria used to determine when catch basins need to be cleaned.

- a. Catch basins are inspected and cleaned annually and issues that may be found are logged and repaired. Basins with problems that are outside of the Borough's ability to abate issue a contractor will be employed to abate.
- b. The Borough has scheduled maintenance within their Yearly Maintenance Plan which was developed using historical data of past cleanings. Beyond the scheduled cleaning, the Borough also conducts cleanings based off visual inspection in areas of concern or with high rates of complaints.

3. Municipal Conveyance System

Describe when and how inspections of MS4 conveyance systems are conducted, and the criteria used to determine when they need to be cleaned. Include a description of the equipment and techniques used.

The Borough's Conveyance System is inspected by Public Works employees during dry weather conditions.

The beach outfalls are inspected weekly to ensure that sand and debris does not interfere with discharge flow to the ocean. Cleaning of the area of the ocean outfall consist of hand digging of sand and debris to maintain proper flow during rain events.

The bay outfalls are inspected weekly at low tide. Duck bills and flapper valves are inspected for damage and debris. Cleaning of the bay outfalls are completed by jetting and vacuuming the lines from the nearest storm drain vault to insure that any debris is removed and that there is proper flow through the duck bills and flapper valves.

4. Municipal Outfall Inspections – Stream Scouring

Describe the program in place to detect, investigate, and control localized stream scouring from stormwater outfalls. Include a description of the equipment and techniques used.

During the inspection of stormwater outfall pipes by Public Works Water & Sewer department stream scouring is checked. The Borough has found no scouring at the location of outfalls within the Borough. If at the time of inspection stream scouring is found the date found, the location found the methods of repaired will be recorded and noted on this form.

5. Municipal Outfall Inspections – Illicit Discharge Detection and Elimination

Describe the program in place for conducting visual dry weather inspections of municipally owned or operated outfalls. Include a description of the equipment and techniques used. Record cases of illicit discharges using the DEP's Illicit Connection Inspection Report Form from the Department's main stormwater webpage.

The Borough annually inspects all outfalls when cleaning of inlets are performed. The inspection are completed during days with no precipitation. The Public Works department will also inspect outfall for illicit connection frequently from the waterways by motor launch during dry weather conditions. Conditions of outfall pipe, check valves, duckbills, bulkhead and possible discharge from illicit connection are part of those inspection. If discharge from possible illicit connection are noted the department will inspect inlets to trace back to the source of discharge to alert code enforcement of possible violations.

6. Other Municipal Infrastructure

List the types of MS4 infrastructure in your town that require inspection but are not noted above in items 1-5. Describe when and how you conduct inspections of this infrastructure and the criteria used to determine when they need to be maintained and/or cleaned.

Drain inlets are checked weekly and after storm or flooding events. Inlets are cleared manually of debris and streets are swept (detailed schedule of street sweeping is attached) Catch basins are also checked at that time.

7. Stormwater Facilities Not Owned or Operated by the Municipality

Describe your program for ensuring adequate long-term cleaning, operation, and maintenance of stormwater facilities not owned or operated by the municipality. This should include your plan for ensuring annual inspections are being done on these private properties and describe how you record the locations and logs associated with private infrastructure.

Stormwater facilities not owned by the Borough are owned by the County of Cape May. Those facilities are cleaned by the Boroughs Public Works department. Any issues regarding maintenance are forwarded to the County for repairs.

8. Infrastructure Records

Indicate the location of records related to stormwater infrastructure inspection, cleaning, maintenance, and repair activities.

120 W Newark Ave, Wildwood Crest, NJ 08260

Form 8 – Community-wide Measures

Part IV.F.2.

1. Herbicide Application Management

Describe your program for preventing herbicides from being washed into the waters of the State and to prevent erosion caused by de-vegetation.

The Borough contracts their herbicide applications and are required to manage applications. Residents are educated through outreach programs through the Green Team and Public Works web site information.

2. Excess Deicing Material Management

Describe your program for ensuring that excess salt piles are removed in a timely manner after storm events.

During loading and unloading of salt and de-icing materials, prevent and/or minimize spills. If salt or de-icing materials are spilled, remove the materials using dry cleaning methods. All collected materials shall be either re-used or properly discarded. Minimize the distance that salt and de-icing materials are transported during loading/unloading activities.

3. Roadside Vegetative Waste

Describe your program for ensuring proper pickup, handling, storage, and disposal of wood waste and yard trimmings generated by the permittee along municipal roads or on municipal properties (trimming trees, mowing, etc.).

Residents have two (2) options for Roadside Vegetative Waste. Curbside waste pickup is available for residence by calling Public Works to schedule a pickup. Residence may also transport vegetative waste to the Public Works convenience center located at the Public Works yard where dumpsters are located for disposal.

4. Roadside Erosion Control

Describe your program to detect and repair erosion along municipal roadways.

Roadside Erosion is controlled by curbs and gutters throughout the Borough. Ordinance 22-12 requires new construction within the Borough requires the use of silt fence and stormwater grates be protected to control runoff. The Borough's Code Enforcement office are empowered to inspect and enforce the ordinance.

Form 9 – Municipal Maintenance Yards & Other Ancillary Operations

Part IV.F.5.

Please complete a separate Form 9 for each yard or site. Indicate the number of yards/sites the municipality owns or operates: _____

1. Site Name and Address	
120 W. Newark Avenue, Wildwood Crest, NJ	
2. Monthly Site Inspections Describe the nature of inspections conducted at this site and the location of inspection logs.	
<p>Inspections at 120 W. Newark Avenue (Public Works Department) are conducted biweekly by employees. Inspections include but are not limited to the following:</p> <ul style="list-style-type: none"> - Storm drains for debris and sediments - Fueling Station Spill Kit - Loose trash and debris that may enter the storm drain - Vehicle wash down drainage vault for debris and sediment <p>Logs of inspection are kept in the Public Works office located on site.</p>	
3. Inventory List List all materials and machinery that are potentially exposed to stormwater.	
Materials	Machinery/Equipment
Diesel and gasoline	Fuel tanks
Road De-icing Salt	Public Works equipment and vehicles
Lubricants - Oils for public works equipment and vehicles	
Solvents – Parts washer in vehicle maintenance	
4. Discharge of Stormwater from Secondary Containment Describe the process in place for discharging stormwater from secondary containment areas where outdoor	

containers are stored.

The discharge pipe/outfall from a secondary containment area (e.g. fuel storage, de-icing solution storage, brine solution) shall have a valve and the valve shall remain closed at all times except as described below. A municipality may discharge stormwater accumulated in a secondary containment area if a visual inspection is performed to ensure that the contents of aboveground storage tank have not come in contact with the stormwater to be discharged. Visual inspections are only effective when dealing with materials that can be observed, like petroleum. Additional requirements in permit Attachment E will be fulfilled.

5. Fueling Operations

Does fueling occur on site? If so, describe the BMPs in place to minimize contamination of stormwater from fueling activities. If not, explain where fueling takes place.

Establish, maintain and implement standard operating procedures to address vehicle fueling; receipt of bulk fuel deliveries; and inspection and maintenance of storage tanks, including the associated piping and fuel pumps. Additional requirements in MH4 permit will be fulfilled.

6. Vehicle/Equipment Maintenance and Repair

Do you perform maintenance and repair on site? Is this conducted indoors or outdoors? If outdoors, describe the BMPs in place to minimize contamination of stormwater from maintenance and repair activities.

Operate and maintain equipment to prevent the exposure of pollutants to stormwater. Whenever possible, conduct vehicle and equipment maintenance activities indoors. For projects that must be conducted outdoors, and that last more than one day, portable tents or covers shall be placed over the equipment being serviced when not being worked on, and drip pans shall be used at all times. Use designated areas away from storm drains or block storm drain inlets when vehicle and equipment maintenance is being conducted outdoors.

7. Wash Wastewater Containment

Do you wash vehicles on site? If so, describe the BMPs in place to minimize contamination of stormwater from these activities. Note that on site containment structures require annual inspections by a NJ licensed professional engineer. If not, explain where vehicle washing takes place.

Manage any equipment and vehicle washing activities so that there are no unpermitted discharges of wash wastewater to storm sewer inlets or to waters of the State. Additional requirements in MH4 permit will be fulfilled.

8. Salt and Other Granular De-icing Materials

Do you store salt and other granular deicing materials on site? If so, describe how they are stored and the BMPs in place to minimize contamination of stormwater from these materials. If not, explain where these materials are stored.

The Borough of Wildwood Crest uses de-icing materials, tarped and stored in a barn style shed under a roof. The roof may need to be extended to meet future needs.

9. Aggregate Material, Wood Chips, and Finished Leaf Compost

Do you store these materials on site? If so, describe how they are stored and the BMPs in place to minimize contamination of stormwater from these materials. If not, explain where these materials are stored.

Store materials such as sand, gravel, stone, topsoil, road millings, waste concrete, asphalt, brick, block and asphalt based roofing scrap and processed aggregate in such a manner as to minimize stormwater run-on and aggregate run-off via surface grading, dikes and/or berms (which may include sand bags, hay bales and curbing, among others) or three sided storage bays. Where possible the open side of storage bays shall be situated on the upslope. The area in front of storage bays and adjacent to storage areas shall be swept clean after loading/unloading. Additional requirements in permit Attachment E will be fulfilled.

10. Cold Patch Asphalt

Do you store these materials on site? If so, describe how they are stored and the BMPs in place to minimize contamination of stormwater from these materials. If not, explain where these materials are stored.

Public Works uses only bagged Cold Patch Asphalt and stores them in a dry storage shed at the public works yard.

11. Street Sweepings and Storm Sewer Cleanout Materials

Do you store these materials on site? If so, describe how they are stored and the BMPs in place to minimize contamination of stormwater from these materials. If not, explain where these materials are stored.

Yard trimmings or wood waste management sites must be operated in a manner that:
a. Diverts stormwater away from yard trimmings and wood waste management operations; and

b. Minimizes or eliminates the exposure of yard trimmings, wood waste and related materials to stormwater.

Additional requirements in MH4 permit will be fulfilled.

12. Construction and Demolition Waste, Wood Waste, and Yard Trimmings

Do you store these materials on site? If so, describe how they are stored and the BMPs in place to minimize contamination of stormwater from these materials. If not, explain where these materials are stored.

Yard trimmings or wood waste management sites must be operated in a manner that:

- a. Diverts stormwater away from yard trimmings and wood waste management operations; and
- b. Minimizes or eliminates the exposure of yard trimmings, wood waste and related materials to stormwater.

Additional requirements in MS4 permit will be fulfilled.

13. Scrap Tires

Do you store these materials on site? If so, describe how they are stored and the BMPs in place to minimize contamination of stormwater from these materials. If not, explain where these materials are stored.

Public Works stores Scrap Tires in the mechanics garage. All scrap tires a removed garage and transported to the Cape May County MUA monthly or as needed.

14. Inoperable Vehicles and Equipment

Do you store inoperable vehicles or equipment on site? If so, describe how they are stored and the BMPs in place to minimize contamination of stormwater. If not, explain where they are stored.

Fueling areas, storage tanks, inoperable vehicles and equipment shall be inspected monthly. An ample supply of spill cleanup material on the site at all times. Any equipment, tanks, pumps, piping and fuel dispensing equipment found to be leaking or in disrepair must be repaired or replaced immediately.

Form 10 – Training

Part IV.F.6-10.

Stormwater Program Coordinators
Describe the training provided for the municipal Stormwater Program Coordinator.
<p>The Storm Water Coordinator is a licensed professional engineer and receives training in the form of the continuing education requirement for maintaining a professional engineer’s license in New Jersey.</p>

Topic	Municipal Employees
Examples: in-person or virtual group sessions, e-Learning, field trainings, and videos	
Describe the training provided for municipal staff.	
SPPP	SPPP training is conducted every year and is instructed by Public Works employees.
Construction Site Stormwater Runoff	Construction Site Stormwater Runoff within the Borough is monitored by code enforcement under UCC 22-12
Post-Construction Stormwater Management in New and Redevelopment	Post-Construction Stormwater Management in New and Redevelopment training is conducted every two (2) years and is instructed by Public Works employees.
Community-wide Ordinances	The Borough's Chapter 22 Construction Article One (1) Is the Community-wide Ordinances covering guidelines for all construction.
Community-wide Measures	Annual Training is conducted as part of SPPP
Stormwater Facilities Maintenance	Stormwater Facilities Maintenance training is conducted every year and is instructed by Public Works employees.

<p>Municipal Maintenance Yards and Other Ancillary Operations</p>	<p>Municipal Maintenance Yards and Other Ancillary Operations training is conducted every year and is instructed by Public Works employees.</p>
<p>MS4 Mapping</p>	<p>Training is not provided; however Maps are reviewed with staff annually.</p>
<p>Outfall Stream Scouring</p>	<p>Outfall Stream Scouring training is conducted every two (2) years and is instructed by Public Works employees.</p>
<p>Illicit Discharge Detection and Elimination</p>	<p>Illicit Discharge Detection and Elimination training is conducted every two (2) years and is instructed by Public Works employees.</p>

Stormwater Management Design Reviewers

Describe the training provided for individuals responsible for reviews and approvals of stormwater management designs.

All individuals responsible for review and approvals of stormwater management designs follow the online training conducted by DEP staff at the following link:

www.NJ.gov/dep/stormwater/training.htm

Municipal Board and Governing Body Members

Describe the training provided for members of the planning/zoning board and municipal council.

All members of the planning/zoning board and municipal council are provided with online training conducted by DEP staff at the following link:

www.NJ.gov/dep/stormwater/training.htm

Training Records

Indicate the location of training records for the above required training.

120 W. Newark Avenue, Wildwood Crest, NJ

Form 11 – MS4 Mapping

Part IV.G.1.

1. Provide a link to the most current MS4 outfall/infrastructure map.	
https://wildwoodcrest.org/uploadfiles/WWC_FloodMitigationandStormSewerMasterPlan.pdf	
2. Indicate the total of each type of MS4 infrastructure listed below (due 01 Jan 2026).	
a. MS4 outfalls	31
b. MS4 ground water discharge points (basins or overland flow infiltration areas)	0
c. MS4 interconnections	0
d. MS4 storm drain inlets	624
e. MS4 manholes	126
f. Length of conveyance (channels, pipes, ditches, etc.)	60,615 ft
g. MS4 pump stations	0
h. MS4 stormwater facilities (any that are not listed above)	0
i. Maintenance yard(s) and other ancillary operations	1
3. Describe how the municipality’s outfall/infrastructure map is reviewed and updated to reflect any new or newly identified MS4 infrastructure (e.g., an outfall is closed, a new basin is constructed, ownership of an outfall has changed, etc.).	
The municipality’s outfall map is reviewed on a yearly basis and updated continuously based off current construction projects within the municipality.	
4. Describe how the municipality will create and update its MS4 Infrastructure Map.	
When new MS4 infrastructure is created, the information is given to DeBlasio and Associates, PC who then update the GIS mapping respectively.	

Form 12 – Watershed Improvement Plan

Part IV.H.

1. Describe how your municipality is developing its Watershed Improvement Plan.

The Borough of Wildwood Crest has been historically subject to flooding, beach erosion and many other associated problems that require an aggressive approach to successfully manage infrastructure maintenance and flood damage mitigation. The Borough has developed a varied approach to protect and maintain its infrastructure, natural areas, public safety, welfare, and property of its residents, and continues to improve annually with the implementation of improvements, new technologies and with assistance from outside public and private agencies. The Borough will continue to pursue and improve upon methods to educate its residents, protect its coastline, manage its infrastructure and natural areas, and mitigate the effects from flood damage and natural disasters. This Flood Mitigation and Storm Sewer Master Plan (FMSSMP) demonstrates the Borough's continued commitment to these goals.

The implementation of the FMSSMP has been an ongoing activity and components of the plan include storm sewer infrastructure improvements, participation in the Community Rating System (CRS), Repetitive Loss Reduction Plan, Beach Maintenance Plan and other specific Borough projects.

2. Describe any regional projects or collaboration efforts with other municipalities.

See the Borough's Flood Mitigation and Storm Sewer Master Plan from the link below:

https://wildwoodcrest.org/uploadfiles/WWC_FloodMitigationandStormSewerMasterPlan.pdf

3. Indicate the location of records related to all public information sessions and meetings for discussions of the Watershed Improvement Plan.

120 W. Newark Avenue, Wildwood Crest, NJ

Attachment A – Points System for Public Education and Outreach Activities4.2

Attachment B – Design Standards for Storm Drain Inlets4.3



Attachment A – Points System for Public Education and Outreach Activities

The permittee shall implement a Public Education and Outreach Program that focuses on educational and pollution prevention activities about the impacts of stormwater discharges on surface water and groundwater and to involve the public in reducing pollutants in stormwater runoff and mitigating flow.

The permittee shall **annually** conduct educational activities that total at least **12 points** and include activities from **at least three of the five categories** found below.

At a minimum, at least one of the activities shall involve educating businesses and the general public of hazards associated with illicit connections and improper disposal of waste.

Each approved activity is listed below with an assigned point value. Additional information on how to conduct these Public Education and Outreach activities can be found under Notes and Definitions Part IV.A.3 and 4 of this permit. Records shall be kept necessary to demonstrate compliance with this requirement, including date of activities and any other relevant documentation.

Category 1: General Public Outreach		
Activity	Description	Points
Social Media	<p>Post relevant stormwater materials on a municipal social media site, such as a Facebook, Instagram, or Twitter page. This information may include links to other stormwater related resources, including the municipality’s stormwater webpage and the NJDEP stormwater website (www.njstormwater.org).</p> <p style="text-align: center;">*One point awarded for each social media platform used. A maximum of 3 points is allowed.</p>	3*
Newspaper Ad	<p>Use Department created and approved stormwater education materials available on www.cleanwaternj.org to publish an ad in a newspaper or newsletter that serves the municipality.</p> <p style="text-align: center;">*A maximum of 1 point is allowed.</p>	1*
Radio/Television	<p>Broadcast a stormwater-related radio or television public service announcement from www.cleanwaternj.org on a local radio or municipal public service channel.</p> <p style="text-align: center;">*One point awarded for each media outlet used. A maximum of 2 points is allowed.</p>	2*
Green Infrastructure Signage	<p>Post signs at municipally owned green infrastructure sites that describe the function and importance of the infrastructure, contact phone number, municipal identification number, and/or website for more information.</p> <p style="text-align: center;">*New signs receive 0.5 points per sign. Existing signs that are maintained or upgraded receive 0.25 points</p>	5*

	per sign. A maximum of 5 points is allowed.	
Billboard/Sign	Post and maintain (for credit in subsequent years) a stormwater-related billboard or sign which can be displayed on a bus, bus stop shelter, recreation field (outfield sign), or other common public location.	2
Mural	Produce and maintain (for credit in subsequent years) the planning and painting of a stormwater pollution themed mural, storm drain art or other artwork at a local downtown/commercial area or other similar public venue.	2
Stormwater Facility Signage	Post signs at municipally owned stormwater management basins or other structural stormwater related facilities that describe the function and importance of the facility, contact phone number, municipal identification number, and/or website for more information. *New signs receive 0.5 points per sign. Existing signs that are maintained or upgraded receive 0.25 points per sign. A maximum of 5 points is allowed.	5*

Category 2: Targeted Audiences Outreach

Activity	Description	Points
Stormwater Display	Present a stormwater related display or materials at any municipal event (e.g., Earth Day, town picnic), at the municipal building or other similar public venue.	1
Promotional Item	Distribute an item or items with a stormwater related message (e.g., refrigerator magnets, temporary tattoos, key chains, bookmarks, pet waste bag dispensers, coloring books, and pens or pencils). Municipality must initially have available a minimum number of the items equal to 10% of the municipal population.	2
Private Stormwater Facilities Education	Provide information to all known owners of stormwater facilities not owned or operated by the municipality (i.e., privately-owned) highlighting the importance of proper maintenance of stormwater measures. For assistance, see information at www.nj.gov/dep/stormwater/maintenance_guidance.htm .	3
Mailing or e-Mailing Campaign	Distribute any of the Department's educational brochures, tip cards, or a municipally produced equivalent (e.g., community calendar, newsletter, or recycling schedule) via a mailing to every resident and business in the municipality. *A maximum of 2 points is allowed.	2*
Ordinance Education	Distribute a letter or e-mail from the mayor or municipal official to every resident and business in the municipality highlighting the requirements and environmental benefits of the Pet Waste, Wildlife Feeding, Litter Control, Improper Disposal of Waste, Containerized Waste/Yard Waste Collection, Private Storm Drain Inlet Retrofitting, Illicit Connection, Tree, and Salt Storage ordinances. Provide a link to the municipal website where subject ordinances are posted.	3

Category 3: School/Youth Education and Activities

Activity	Description	Points
School Presentations	Provide water-related educational presentation(s) and/or activities to local preschool, elementary, middle,	5*

	and/or high school classes using municipal staff or local partner organizations. Topics could include stormwater, nonpoint source pollution, watersheds, water conservation and water quality. For ideas, see information at www.nj.gov/dep/seeds .	
	*Presentations receive 1 point per presentation, with a maximum of 5 points allowed.	
Water Education Workshops	Provide water-related professional development workshops for local teachers from a registered NJ Department of Education Professional Development Provider	2
Storm Drain Labeling	Organize a project to label and/or maintain storm drain labels (that are not already precast with a message) with a scout troop, local school district, or faith-based group, or other community youth group for a minimum of 40 labels. This project could also include stenciling over precast labels to improve legibility.	3
Educational Contest for Schools	Organize an educational contest with a local school district or a local community organization serving youth to design a poster, magnet, rain stick, rain barrel or other craft/art object. Contest themes shall have an appropriate stormwater message. Winning entries are to be displayed at publicly accessible locations within the municipality such as at the town hall, library, post office, or school. The winning design should be shown on the municipality's website or social media site, if practical.	3
AmeriCorps Event	Coordinate an event (e.g., volunteer stream monitoring, educational presentations, or stormwater awareness project) through AmeriCorps NJ Watershed Ambassador Program.	4
Clean-up	Sponsor or organize a litter clean up for a scout troop, local school district, faith-based group or other community youth group along a local waterway, public park, stormwater facility, or in an area with storm drains that discharge to a local lake or waterway.	3

Category 4: Watershed/Regional Collaboration

Activity	Description	Points
Regional Stormwater Collaboration	Participate in a regional stormwater, community collaborative or other watershed-based group on a regular basis to discuss impaired waterbodies, TMDLs, regional stormwater related issues, or watershed restoration plans that address those waterbodies. Evaluate, develop, and implement remedies that resolve stormwater-related issues within the affected waterbody or watershed.	3
Green Infrastructure Workshop	Organize or participate in a rain barrel, rain garden or other green infrastructure workshop on a regional or watershed basis. This could be a partnership exercise with a local watershed organization, utility, university, school, youth/faith-based group, and/or other organization.	3
Community Activity	Organize or participate in the organization of a regional or watershed-based event to carry out stormwater activities such as stormwater facility maintenance or litter clean-up. The municipality may identify and enter into a partnership agreement with a local group such as a watershed organization, utility, university, school, youth/faith-based group, and/or other organization to carry out these activities.	3

Category 5: Community Involvement Activities

Activity	Description	Points
----------	-------------	--------

Volunteer Stormwater Assessment or Stream Monitoring	Establish a volunteer stormwater facility assessment (inspection, inventory and/or mapping) or stream monitoring program for a waterbody within the municipality to gauge the health of the waterway through chemical, biological or visual monitoring protocols. Contact NJDEP's AmeriCorps NJ Watershed Ambassador Program or review USEPA National Directory of Volunteer Monitoring Programs.	3
Rain Barrel Workshop	Organize or participate in a rain barrel workshop. This could be a partnership exercise with a local watershed organization, university, school, youth/faith-based group, and/or another nonprofit.	3
Rain Garden Workshop	Organize or participate in a rain garden training or installation workshop. This could be a partnership exercise with a local watershed organization, university, school, youth/faith-based group, and/or another nonprofit.	3
Community Event	Organize or participate in the organization of a community event to carry out stormwater activities such as stormwater measure maintenance or a stream buffer restoration. The municipality may identify and enter into a partnership agreement with a local group such as a watershed organization, university, utility, school, youth/faith-based group, and/or other nonprofit to carry out these activities.	3
Community Involvement	Organize a project with a local organization to create and post signs at either green and/or gray stormwater infrastructure sites or facilities that describe the function and importance of the facility, contact phone number, municipal identification number, and/or website for more information. *Signs receive 0.5 points per sign. A maximum of 5 points is allowed.	5*

Attachment B - Design Standards for Storm Drain Inlets

Application of Design Standard

The below design standard applies to the following types of storm drain inlet installation or retrofit projects unless a more stringent standard is specified by the municipality's Stormwater Control Ordinance:

- Storm drain inlets installed as part of new development and redevelopment (public or private) that disturb one acre or more;
- Storm drain inlets installed as part of new development and redevelopment (public or private) that disturb less than one acre that are part of a larger common plan of development or sale (e.g., phased residential development) that ultimately disturbs one acre or more;
- Tier A Municipality owned or operated storm drain inlets must be retrofitted where the storm drains are (1) in direct contact with any repaving, repairing (excluding individual pothole repair), or resurfacing (including top coating or chip sealing with asphalt emulsion or a thin base of hot bitumen); or (2) in direct contact with any reconstruction or alteration of facilities; and
- Privately-owned or operated storm drain inlets (e.g., condominium association) must be retrofitted where the storm drains are (1) in direct contact with any repaving, repairing (excluding individual pothole repair), or resurfacing (including top coating or chip sealing with asphalt emulsion or a thin base of hot bitumen); or (2) in direct contact with any reconstruction or alteration of facilities. This does not include single family homes.

Design Standard

Grates in pavement or other ground surfaces shall meet either of the following standards:

- The New Jersey Department of Transportation (NJDOT) bicycle safe grate standards described in Chapter 2.4 of the NJDOT Bicycle Compatible Roadways and Bikeways Planning and Design Guidelines (see www.state.nj.us/transportation/about/publicat/pdf/BikeComp/introtofac.pdf); or
- A grate where each individual clear space in that grate has an area of no more than seven (7.0) square inches or is not greater than 0.5 inches across the smallest dimension. Note that the Residential Site Improvement Standards at N.J.A.C. 5:21 include requirements for bicycle safe grates.

Examples of grates subject to this standard include grates in grate inlets; the grate portion (non-curb opening portion) of combination inlets; grates on storm sewer manholes; ditch grates; trench grates; and grates of spacer bars in slotted drains. Examples of ground surfaces include surfaces of roads, (including bridges), driveways, parking areas, bikeways, plazas, sidewalks, lawns, fields, open channels, and stormwater basin floors used to collect stormwater from the surface into a storm drain or surface water body.

For curb-openings inlets, including curb-opening inlets in combination inlets, the clear space in the curb opening, or each individual clear space if the curb opening has two or more clear spaces, shall have an area of no more than seven (7.0) square inches or be no greater than two (2.0) inches across the smallest dimension.

Exemptions from the Design Standard

- Where each individual clear space in the curb opening in existing curb-opening inlets does not have an area of more than nine (9.0) square inches;
- Where the review agency determines that the standards would cause inadequate hydraulic performance that could not practicably be overcome by using additional or larger storm drain inlets;
- Where flows from the water quality design storm as specified in N.J.A.C. 7:8 are conveyed through any device (e.g., manufactured treatment device, or a catch basin hood) that is designed, at a minimum, to prevent delivery of all solid and floatable materials that could not pass through one of the following:

A rectangular space four and five-eighths inches long and one and one-half inches wide; or

A bar screen having a bar spacing of 0.5 inches;

Note that these exemptions do not authorize any infringement of requirements in the Residential Site Improvement Standards for bicycle safe grates in new residential development (N.J.A.C. 5:21-4.18(b)2 and 7.4(b)1).

- Where flows are conveyed through a trash rack that has parallel bars with one inch (1") spacing between the bars, to the elevation of the water quality design storm as specified in N.J.A.C. 7:8; or
- Where the Department determines, pursuant to the New Jersey Register of Historic Places Rules at N.J.A.C. 7:4-7.2(c), that action to meet the standard is an undertaking that constitutes an encroachment or will damage or destroy the New Jersey Register listed historic property.

**ENGINEERS CERTIFICATION OF ANNUAL INSPECTION OF EQUIPMENT
AND VEHICLE WASH WASTEWATER CONTAINMENT STRUCTURE**

(Complete a separate form for each vehicle wash wastewater containment structure)

Permittee: _____ NJPDES Permit No: _____

Containment Structure Location: _____

The annual inspection of the above referenced vehicle wash wastewater containment structure was conducted on _____ (date). The containment structure and appurtenances have been inspected for:

1. The integrity of the structure including walls, floors, joints, seams, pumps and pipe connections
2. Leakage from the structure's piping, vacuum hose connections, etc.
2. Bursting potential of tank.
3. Transfer equipment
4. Venting
5. Overflow, spill control and maintenance.
6. Corrosion, splits, and perforations to tank, piping and vacuum hoses

The tank and appurtenances have been inspected for all of the above and have been determined to

be: Acceptable _____

Unacceptable _____

Conditionally Acceptable _____

List necessary repairs and other conditions: _____

I certify under penalty of law that I have personally examined and am familiar with the information submitted in this document and all attachments and that, based on my inquiry of those individuals immediately responsible for obtaining the information, I believe the submitted information is true, accurate and complete. I am aware that there are significant penalties for submitting false information, including the possibility of fine and imprisonment (N.J.A.C. 7:14A-2.4(d)).

Name (print): _____ Seal: _____

Signature: _____

Date: _____

Underground Vehicle Wash Water Storage Tank Use Log

Name and Address of Facility _____ Facility Permit Number _____

Tank ID Number _____

Tank Location _____

Tank Volume _____ gallons

Tank Height _____ inches

95% Volume _____ gallons

95% Volume _____ inches

<u>Date and Time</u>	<u>Inspector</u>	<u>Height of Product Before Introducing Liquid (inches)</u>	<u>Is Tank Less Than 95% Full? (Y/N)</u>	<u>Visual Inspection Pass? (Y/N)</u>	<u>Comments</u>

Notes: The volume of liquid in the tank should be measured **before** each use.

Liquid **should not be introduced** if the tank contains liquid at 95% of the capacity or greater.

A visual inspection of all exposed portions of the collection system should be performed before each use. Use the comments column to document the inspection and any repairs.

Underground Vehicle Wash Water Storage Tank Pump Out Log

Name and Address of Facility _____ Facility Permit Number _____

Tank ID Number _____

Tank Volume _____ gallons

Tank Location _____

<u>Date and Time of Pump Out</u>	<u>Volume of Liquid Removed</u>	<u>Waste Hauler *</u>	<u>Destination of the Liquid Disposal *</u>

* The Permittee must maintain copies of all hauling and disposal records and make them available for inspection.

Public Education Pamphlet.....6.2

Pet Waste Pamphlet.....6.3

Car Wash Pamphlet.....6.4

Fertilizer Pamphlet.....6.5

Motor Oil Pamphlet.....6.6



STORMWATER POLLUTION: WHAT DO YOU THINK?

- You may think littering is no big deal (it is).
- You may think that whatever runs into the storm drains gets treated before it reaches local rivers and streams (it isn't).
- You may think motor oil and other hazardous materials doesn't harm the water very much (it does).

Pollution seeps into the ground and is carried by stormwater (rain and snow) directly to our drinking water, streams, lakes and oceans. Contaminated stormwater is the #1 cause of water pollution in New Jersey. Simple things, like proper clean-up after oneself and careful use of chemicals in the home, office and yard, are helpful ways for businesses and residents to protect the water.

The Borough of Stone Harbor has ordinances aimed at reducing pollution from litter, fertilizer, oil, pesticides, detergents, animal waste, grass clippings and other debris. For details, see <https://stoneharbornj.org/departments/departments-of-water-sewer/> Thank you for keeping them in mind and doing your share.



**Keep grass, leaves and trash
out of storm drains**



Don't feed wildlife



Clean up after your pet



**Limit use of fertilizers &
pesticides**



**Properly handle hazardous
products**



**NJ DEPARTMENT OF
ENVIRONMENTAL
PROTECTION**

www.nj.gov/dep/dwg

www.cleanwaternj.org

**IF YOU DON'T
PICK UP AFTER YOUR PET,
IT MIGHT AS WELL
POOP IN THE RIVER.**



**Rain washes pollutants into storm drains which
flows directly into our streams, lakes,
rivers and the ocean.
So what can you do?**



www.cleanwaterNJ.org

WHAT'S THE PROBLEM WITH PET WASTE?

Rain can wash pet waste that sits on a lawn or unpaved surface into storm drains, ultimately ending up in our lakes, rivers and the ocean. Pet waste contains coliform bacteria and other pollutants that can make people sick, and often cause beach closures on lakes or the ocean. Coliform bacteria can contaminate shellfish, which causes people to get very sick when they are eaten. Bacteria from pet waste can also pollute your drinking water, as well as kill fish, wildlife and plants. Pet waste is not only a health hazard but also a nuisance in our neighborhoods.

YOU CAN HELP!

- Use newspaper, plastic bags, or a pooper-scooper to pick up the waste when you walk your pet.
- Properly dispose of pet waste into the trash or toilet. (Do NOT dispose of newspaper or plastic bags in the toilet.)
- Do not dispose of pet waste in storm drains.

WHY SHOULD YOU CARE ABOUT CLEAN WATER?

Stormwater pollution is one of the greatest threats to New Jersey's clean water supply. Clean water provides access to safe drinking water, a place for recreation, commercial opportunities, healthy wildlife habitats, and adds beauty to our landscape. Rain washes pollution from streets, parking lots, and lawns into storm drains, then directly to our streams, rivers, lakes and the ocean.

Did you know more than 60 percent of water pollution comes from things like motor oil, fertilizers, pet waste, and detergents? By sharing the responsibility and making small, easy changes in our daily lives, we can keep common pollutants out of stormwater.



www.cleanwaterNJ.org



Thanks to the Washington State Department of Ecology, King County, and the cities of Bellevue, Seattle and Tacoma.

**IF YOU WASH
YOUR CAR IN THE DRIVEWAY,
YOU MIGHT AS WELL WASH IT
IN THE LAKE.**



**Rain washes pollutants into storm drains which
flows directly into our streams, lakes,
rivers and the ocean.
So what can you do?**



www.cleanwaterNJ.org

WHAT'S THE PROBLEM WITH WASHING YOUR CAR?

Washing your car on a paved surface can allow the soapy wash water and other pollutants, like oil and grease, to run off into a storm drain. Most soap contains phosphates and other chemicals that, in large amounts can contaminate your drinking water, as well as kill fish, wildlife and plants. The soap, together with the dirt and oil washed from your car, flows into nearby storm drains, which flows directly into lakes, rivers and the ocean. The phosphates from the soap can cause excess algae to grow, which can be harmful to the water quality.

YOU CAN HELP!

- Take your car to a car washing facility, rather than washing it yourself. Commercial car washes treat and recycle the water.
- If you can't get to a car washing facility, wash your car on an unpaved surface and use biodegradable soap.
- Organize a Car Wash Fundraiser for a local organization. Visit www.cleanwaterNJ.org to learn how.

WHY SHOULD YOU CARE ABOUT CLEAN WATER?

Stormwater pollution is one of the greatest threats to New Jersey's clean water supply. Clean water provides access to safe drinking water, places for recreation, commercial opportunities, healthy wildlife habitats, and adds beauty to our landscape. Rain washes pollution from streets, parking lots, and lawns into storm drains, then directly to our streams, rivers, lakes and oceans.

Did you know more than 60 percent of water pollution comes from things like motor oil, fertilizers, pet waste, and detergents? By sharing the responsibility and making small, easy changes in our daily lives, we can keep common pollutants out of stormwater.



www.cleanwaterNJ.org



Thanks to the Washington State Department of Ecology, King County, and the cities of Bellevue, Seattle and Tacoma.

**IF YOU USE TOO MUCH
FERTILIZER ON YOUR LAWN,
YOU MIGHT AS WELL
FERTILIZE THE STREAM.**



**Rain washes pollutants into storm drains which
flows directly into our streams, lakes,
rivers and the ocean.
So what can you do?**



www.cleanwaterNJ.org

WHAT'S THE PROBLEM WITH FERTILIZERS AND PESTICIDES?

Fertilizers help plants grow by adding nutrients to the soil. Pesticides (including herbicides) are any toxic substances used to kill insects, animals or plants. If fertilizers or pesticides are improperly applied, they can wash off your lawn or garden into storm drains and directly to our lakes, rivers, and the ocean. These chemicals can contaminate your drinking water, as well as kill fish, wildlife and plants. Too much fertilizer washing into a lake can cause algae to bloom in lakes, which will affect swimming, fishing and boating.

YOU CAN HELP!

- Test your soil at your County's Rutgers Cooperative Research and Extension office, or buy a self-test kit.
- Use natural, slow-release nitrogen, or low phosphorus fertilizers.
- Look into natural alternatives to fertilizers and pesticides, such as integrated pest management (IPM).
- If you need to use fertilizers or pesticides, follow the instructions on the label on how to correctly apply.
- Do not apply fertilizers or pesticides before it rains. This will not allow the fertilizers or pesticides to penetrate through the soil.
- Use drought-resistant native plants in gardens; they require less fertilizer and less water.
- Use a mulching mower instead of bagging grass clippings.

WHY SHOULD YOU CARE ABOUT CLEAN WATER?

Stormwater pollution is one of the greatest threats to New Jersey's clean water supply. Clean water provides access to safe drinking water, places for recreation, commercial opportunities, healthy wildlife habitats, and adds beauty to our landscape. Rain washes pollution from streets, parking lots, and lawns into storm drains, then directly to our streams, rivers, lakes and the ocean.

Did you know more than 60 percent of water pollution comes from things like motor oil, fertilizers, pet waste and detergents? By sharing the responsibility and making small, easy changes in our daily lives, we can keep common pollutants out of stormwater.



www.cleanwaterNJ.org



Thanks to the Washington State Department of Ecology, King County, and the cities of Bellevue, Seattle and Tacoma.

**IF YOUR CAR LEAKS
OIL IN THE DRIVEWAY,
YOU MIGHT AS WELL
LET IT LEAK IN THE OCEAN.**



**Rain washes pollutants into storm drains which
flows directly into our streams, lakes,
rivers and the ocean.
So what can you do?**



www.cleanwaterNJ.org

WHAT'S THE PROBLEM WITH MOTOR OIL?

Oil does not dissolve in water. When motor oil runs into storm drains either from changing your car's oil or from leaky cars, it goes directly to our lakes, rivers and the ocean. Oil and other petroleum products are toxic and can contaminate your drinking water, as well as kill fish, wildlife and plants. Did you know that one pint of oil can make a slick larger than a football field? Used motor oil is the largest single source of all oil pollution in lakes, streams and rivers. Americans spill 180 million gallons of used oil each year into our waters.

YOU CAN HELP!

- Keep your car well maintained.
- Regularly check your car for leaks and schedule tune-ups. If you find leaks or drips, have your car repaired.
- Take your car to a service center to the change oil.
- If you do change your own oil, do it in a garage, never on the street. Use a self-contained oil pan and discard the oil at a local service center for recycling.
- NEVER discard oil, gas, or antifreeze into a storm drain.
- If you spill hazardous fluids, contain it immediately with rags and cat litter. Clean up the spill and properly dispose of the waste.

WHY SHOULD YOU CARE ABOUT CLEAN WATER?

Stormwater pollution is one of the greatest threats to New Jersey's clean water supply. Clean water provides access to safe drinking water, a place for recreation, commercial opportunities, healthy wildlife habitats, and adds beauty to our landscape. Rain washes pollution from streets, parking lots, and lawns into storm drains, then directly into streams, rivers, lakes and the ocean.

Did you know more than 60 percent of water pollution comes from things like motor oil, fertilizers, pet waste, and detergents? By sharing the responsibility and making small, easy changes in our daily lives, we can keep common pollutants out of stormwater.



www.cleanwaterNJ.org



Thanks to the Washington State Department of Ecology, King County, and the cities of Bellevue, Seattle and Tacoma.

Street Sweeping Report7.2

Summer Trash Collection Map7.3

Winter Trash Collection Map7.4

Stormwater Outfall Pipe Map7.5

Street Sweep Report

Illicit Connection Elimination Program

Wildwood Crest 2023

RD: 45010
Dr. 45010

- Does the municipality have an ongoing program to detect and eliminate illicit connections to municipally owned or operated outfall pipes? Yes
2. How many outfall pipes were inspected during the past calendar year? 32
3. Number of illicit connections detected during the past calendar year: 0
4. Number of illicit connections eliminated during the past calendar year: 0

Street Sweeping Program

1. In the past calendar year, were all required streets swept? Yes
2. What was the total number of miles swept? 222

List the amount of materials collected for each month in 2023 **13**

	Cubic Yards
3. Units:	
4. January:	0
5. February:	0
6. March:	0
7. April:	2
8. May:	5
9. June:	95
10. July:	141
11. August:	122
12. September:	85
13. October:	85
14. November:	0
15. December:	0
16. Total (Note: 1.053 cubic yards = 1 ton):	508.07
17. Explain the reason if reporting zero (0) for a month above:	less demand for street sweeping in the off season on the barrier island.

1
1
10
10
10
145
120
95
95
40
10
1
538

1. Total number of catch basins that the municipality operates: 1520
2. Total number of catch basins inspected: 520
3. Total number of catch basins cleaned: 520
4. Amount of materials removed from catch basins, in tons, during the past calendar year: 23
5. Units: Tons

20

Report Details - Part E

Outfall Pipe Stream Scouring Remediation

For all outfall pipes undergoing remediation through a scour remediation program, attach additional page(s) as necessary indicating the location of the outfall pipe (including the alphanumeric identifier), the repair start date, and the repair completion date.

1. Has the municipality developed a prioritized list of outfall pipes requiring outfall pipe stream scouring remediation? Yes

De-icing Material and Sand Storage

1. Does the municipality have a permanent structure for all de-icing material storage? Yes
2. If sand is being stored outside, is it set back 50 feet from storm sewer inlets, ditches or other stormwater conveyance channels, and surface water bodies? N/A - no sand stored outdoors

Fueling Operations

1. Is the municipality implementing Best Management Practices for vehicle fueling and receiving of bulk fuel deliveries at maintenance yard operations in accordance with Attachment E of the permit? Yes

Vehicle Maintenance

2023

South of Preston Ave.
to Jefferson Ave.

FRIDAY
Trash & Recycle
TUESDAY
Trash

South of Atlanta Ave.
to Preston Ave.

THURSDAY
Trash & Recycle
MONDAY
Trash

South of Lotus Rd.
to Atlanta Ave.

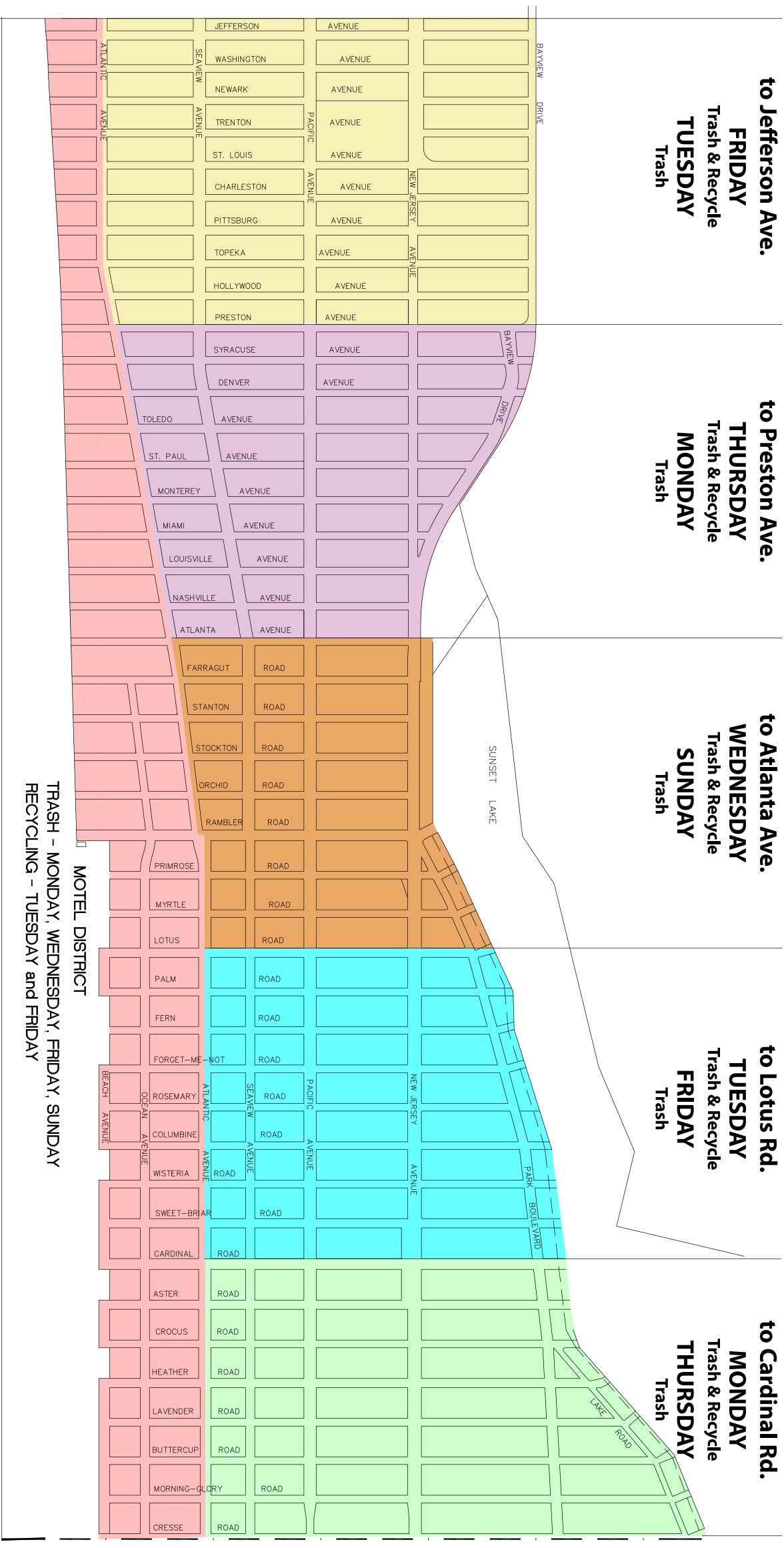
WEDNESDAY
Trash & Recycle
SUNDAY
Trash

South of Cardinal Rd.
to Lotus Rd.

TUESDAY
Trash & Recycle
FRIDAY
Trash

South Side of Cresse Ave.
to Cardinal Rd.

MONDAY
Trash & Recycle
THURSDAY
Trash



TRASH - MONDAY, WEDNESDAY, FRIDAY, SUNDAY
RECYCLING - TUESDAY and FRIDAY

**THE BOROUGH OF WILDWOOD CREST
TRASH AND RECYCLING PICK-UP**

SUMMER SCHEDULE
JUNE 1 THRU SEPTEMBER 30



www.wildwoodcrest.org

HOLIDAYS
Pickup will be next scheduled work day except for the following which are regularly scheduled pick up days: Memorial Day, 4th of July, and Labor Day

BULK PICKUP
Call Public Works
609-522-7446

VEGETATIVE WASTE, ELECTRONICS, RIGID PLASTICS
Call ahead 609-522-7446
WEDNESDAY PICKUPS ONLY

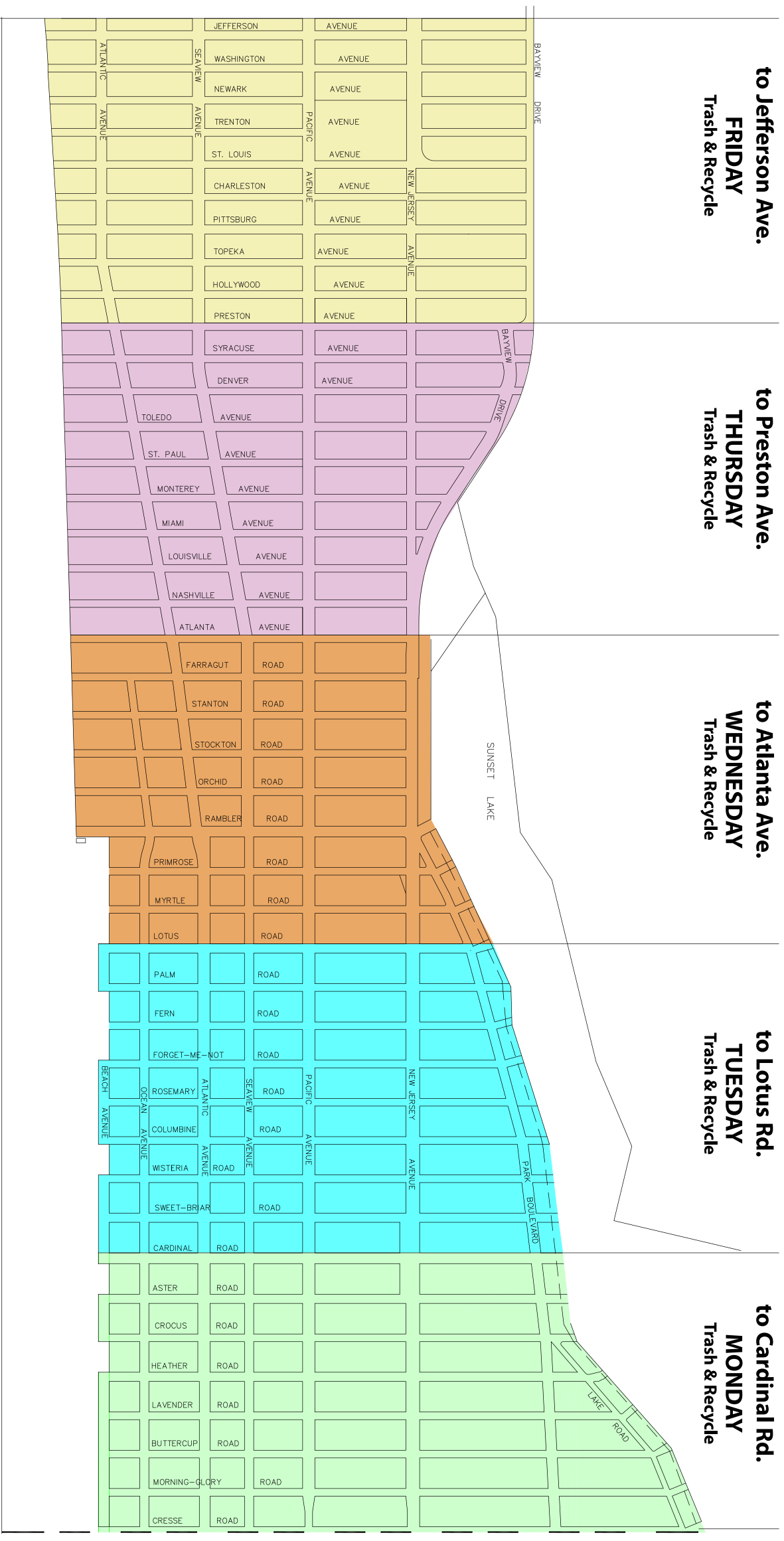
South of Preston Ave.
to Jefferson Ave.
FRIDAY
Trash & Recycle

South of Atlanta Ave.
to Preston Ave.
THURSDAY
Trash & Recycle

South of Lotus Rd.
to Atlanta Ave.
WEDNESDAY
Trash & Recycle

South of Cardinal Rd.
to Lotus Rd.
TUESDAY
Trash & Recycle

South Side of Cresse Ave.
to Cardinal Rd.
MONDAY
Trash & Recycle



**THE BOROUGH OF WILDWOOD CREST
TRASH AND RECYCLING PICK-UP**

WINTER SCHEDULE
OCTOBER 1 THRU MAY 31



www.wildwoodcrest.org

HOLIDAYS
Pickup will be next scheduled work day except for the following which are regularly scheduled pick up days: Memorial Day, 4th of July, and Labor Day

BULK PICKUP
Call Public Works
609-522-7446

VEGETATIVE WASTE, ELECTRONICS, RIGID PLASTICS
Call ahead 609-522-7446
WEDNESDAY PICKUPS ONLY

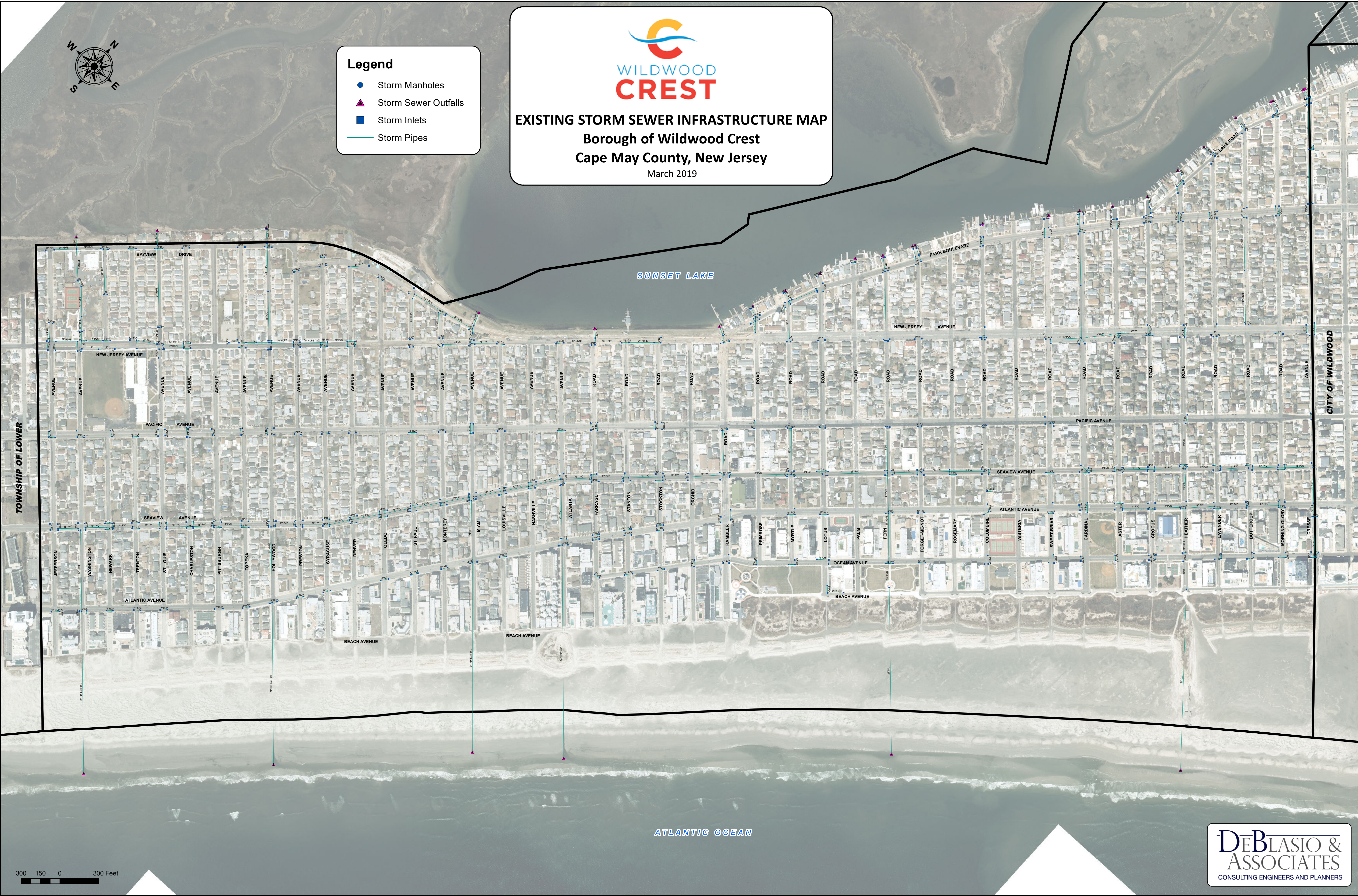


Legend

- Storm Manholes
- ▲ Storm Sewer Outfalls
- Storm Inlets
- Storm Pipes



EXISTING STORM SEWER INFRASTRUCTURE MAP
Borough of Wildwood Crest
Cape May County, New Jersey
March 2019



TOWNSHIP OF LOWER

CITY OF WILDWOOD

SUNSET LAKE

ATLANTIC OCEAN

300 150 0 300 Feet

